

Tech Sheet: Rockwell Sabre 40, 65, 75, 80

(rockwell-SAB.pdf)



Rockwell Sabre Cockpit/Door Cover

Section 1: Canopy/Cockpit/Fuselage Covers

The **Rockwell Sabre 40, 65, 75, 80 Cockpit Cover** helps reduce damage to the upholstery and avionics caused by excessive heat and can eliminate problems caused by leaking door and window seals. They keep the windshield and window surfaces clean and help prevent vandalism and theft.

The **Rockwell Sabre 40, 65, 75, 80 Cockpit Cover** is designed to cover the windshield and side windows of the cockpit. Attachment buckles are made of nonmetal *Delrin*, designed for rugged outdoor use. The windshield cover comes with a duffle bag. The N-number can be imprinted onto the cover for an extra charge. The windshield cover is trimmed in the colors of the aircraft.

This cover type is made from Silver Acrylic Sunbrella canvas and is 100% lined with a soft and smooth microfiber. Bruce's Custom Covers developed this material combination especially for aircraft protection. The outer material is medium weight and treated for water resistance, UV resistance and anti-static buildup. The inner lining is a very soft and smooth microfiber to prevent scratching. The material is very reflective, and tests show that the cabin interior temperature can be reduced to near-ambient temperature on the hottest of days. It is water, ice and snow repellent, yet breathable to allow moisture to escape from between the cover and the aircraft surface.

The **Rockwell Sabre 40, 65, 75, 80 Cockpit/Nose Cover** helps reduce damage to the upholstery and avionics caused by excessive heat and can eliminate problems caused by leaking door and window seals. They keep the windshield and window surfaces clean and help prevent vandalism and theft.

The **Rockwell Sabre 40, 65, 75, 80 Cockpit/Nose Cover** is designed to cover the windshield and side windows of the cockpit. Attachment buckles are made of nonmetal *Delrin*, designed for rugged outdoor use. The windshield cover comes with a duffle bag. The N-number can be imprinted onto the cover for an extra charge. The windshield cover is trimmed in the colors of the aircraft.

This cover type is made from Silver Acrylic Sunbrella canvas and is 100% lined with a soft and smooth microfiber. Bruce's Custom Covers developed this material combination especially for aircraft protection. The outer material is medium weight and treated for water resistance, UV resistance and anti-static buildup. The inner lining is a very soft and smooth microfiber to prevent scratching. The material is very reflective, and tests show that the cabin interior temperature can be reduced to near-ambient temperature on the hottest of days. It is water, ice and snow repellent, yet breathable to allow moisture to escape from between the cover and the aircraft surface.



Sabre 40 Cockpit Cover



Sabre 40 Cockpit Cover

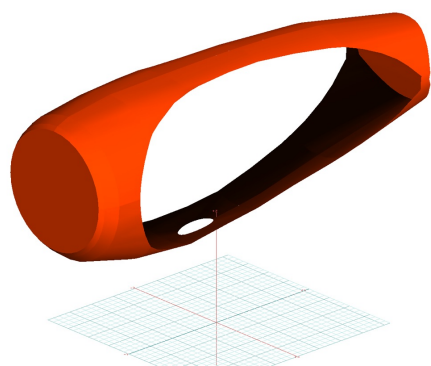
Description	Part Number	Price
COCKPIT COVER, Sabre 40 (P&W JT-12 Engines)	SAB-000	\$730.00
COCKPIT COVER (extended over door), Sabre 40 (P&W JT-12 Engines)	SAB-005	\$835.00
COCKPIT COVER (extended over & below door), Sabre 40 (P&W JT-12 Engines)	SAB-010	\$990.00
COCKPIT COVER, Sabre 65 (Garrett 731 Engines)(CT-39)	SAB-015	\$730.00
COCKPIT COVER (extended over door), Sabre 65 (Garrett 731 Engines)(CT-39)	SAB-020	\$810.00
COCKPIT COVER (extended over & below door), Sabre 65 (Garrett 731 Engines)(CT-39)	SAB-025	\$990.00
COCKPIT/CABIN COVER, Sabre 65 (Garrett 731 Engines)(CT-39)	SAB-030	\$1425.00
COCKPIT/NOSE COVER, Sabre 65 (Garrett 731 Engines)(CT-39)	SAB-035	\$2010.00
COCKPIT COVER/NOSE COVER (extended over door), Sabre 65 (Garrett 731 Engines)(CT-39)	SAB-040	\$2085.00
COCKPIT COVER, Sabre 80	SAB-045	\$945.00
COCKPIT COVER (extended over & below door), Sabre 80	SAB-050	\$990.00
COCKPIT/NOSE COVER, Sabre 80	SAB-055	\$1950.00

Section 2: Engine Covers

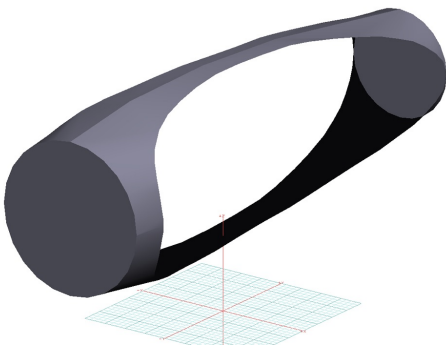
Tri-Fold Ring Engine Covers are designed to install easily yet be completely storable. A spring steel hoop is sewn into the hem of each cover, allowing them to be installed without climbing onto the wing or using a stepladder in many cases. To store the covers the spring steel hoop folds like a band-saw blade into three nesting rings. Each cover folds into a compact circular bundle which is stored in the included duffle bag, yet they unfold quickly for use. The Tri-Fold Ring cover is made of medium weight Solution-Dyed Polyester which is available in a variety of colors to match the paint trim. Each cover set comes complete with installation and folding instructions. The aircraft's registration number can be silkscreened onto the cover for an extra charge.

ALL-YEAR USE MATERIAL - Made with Solution dyed Polyester fabric, the all-year use material is the best option for sun protection and cover longevity. This heavier more durable material is intended for all weather conditions, such as rain and snow or lots of sun.

The **Rockwell Sabre 40, 65, 75, 80 Bikini Style Engine Covers** are a single-piece design using a soft and smooth stretchy and fabric. The cover stretches tightly over both the intake and exhaust, installing quickly and easily. These covers are designed to be used as hangar dust covers and have a useful life of approximately one year.



Cessna Citation 680 Engine Cover, Bikini Type



Gulfstream G550 Engine Covers, Bikini Type (3D Model)

Description	Part Number	Price
ENGINE COVERS (WITH TR'S), Sabre 40 (P&W JT-12 Engines) (set of 4)	SAB-100	\$1100.00
ENGINE COVERS (WITHOUT TR'S), Sabre 40 (P&W JT-12 Engines) (set of 4)	SAB-110	\$1100.00
ENGINE COVERS (WITH TR'S), Sabre 65 (Garrett 731 Engines)(CT-39) w/plugs (set of 6)	SAB-120	\$1100.00
ENGINE COVERS, Sabre 75-Alpha (GE Engines) (set of 4)	SAB-130	\$1100.00
ENGINE COVERS (WITH HF ANTENNA ON LEFT NACELLE), Sabre 80 (set of 4)	SAB-140	\$1205.00
ENGINE COVERS (NO HF ANTENNA ON LEFT NACELLE), Sabre 80 (set of 4)	SAB-150	\$1100.00
ENGINE COVERS, Hangar Use, Bikini Type (set of 2)	SAB-155	\$905.00

Section 4: Wing/Tail/Empennage Covers

Horizontal Stabilizer Covers are a perfect solution to protect your paint from sun damage and prevent frost, snow, ice buildup, and corrosion. They are made from Solution-Dyed Polyester or Acrylic *Sunbrella*. They cover the entire upper surface of the stabilizers and overlap around the leading and trailing edges as well as the wing tip. The covers secure under each stabilizer with adjustable straps. In some instances, cut-outs are made in the trailing edge of the wing covers to accommodate static wicks. Horizontal Stabilizer Covers are available for winter use or long-term all year use, and are normally made from Solution-Dyed Polyester or Acrylic *Sunbrella*. A Hail Protection version can be made which incorporates dense closed cell foam into the entire upper surface of the wing covers to help prevent hail damage. Although these covers are bulky, they do help protect your wing and control surfaces against small to medium-size hail.

ALL-YEAR USE MATERIAL - Made with Silver Acrylic Sunbrella canvas, the all-year use material is the best option for sun protection and cover longevity. This heavier more durable material is intended for all weather conditions, such as rain and snow or lots of sun.

WINTER USE MATERIAL - Made with Solution-Dyed Polyester fabric, this option is intended for seasonal use to aid in deicing, rain mitigation, or for occasional travel. The material is lighter and more compact, but more susceptible to UV damage and may have a shorter useful life if used continuously outside than the all-year use material.

The **Rockwell Sabre 40, 65, 75, 80 Wing Covers** are a perfect solution to protect your paint from sun damage and prevent winter frost, snow, ice buildup, and corrosion. They are made from Solution-Dyed Polyester or Acrylic *Sunbrella* and form-fit to slip around each wing tip, cover the entire upper surface of the wing and wrap around the leading and trailing edges. The covers secure under the wing with adjustable straps from the trailing edge to the leading edge. The wing covers can also attach to each other with

adjustable straps at the leading and trailing edges of the wing under the belly of the plane. In some instances, cut-outs are made in the trailing edge of the wing covers to accommodate static wicks. We have the ability to also accommodate wing tip modifications, such as STOL kits, droop tips, and vortex generators. Wing covers are labeled LEFT and RIGHT for your convenience. Wing Covers are available for winter use or long-term, all-year use. A Hail Protection version can be made which incorporates very dense closed cell foam into the entire upper surface of the wing covers to help prevent hail damage. Although these covers are bulky, they do help protect your wing and control surfaces against small to medium-size hail.

ALL-YEAR USE MATERIAL - Made with Silver Acrylic Sunbrella canvas, the all-year use material is the best option for sun protection and cover longevity. This heavier more durable material is intended for all weather conditions, such as rain and snow or lots of sun.

WINTER USE MATERIAL - Made with Solution-Dyed Polyester fabric, this option is intended for seasonal use to aid in deicing, rain mitigation, or for occasional travel. The material is lighter and more compact, but more susceptible to UV damage and may have a shorter useful life if used continuously outside than the all-year use material.

Description	Part Number	Price
WING COVERS, Sabre 80 (set of 2)	SAB-200	\$3330.00
HORIZONTAL STABILIZER COVERS, Sabre 80 (set of 2)	SAB-300	\$1300.00

Section 5: HeatShields & Sun Reflectors

Heatshields are interior sunshades for an aircraft's windows or canopy glass. The product is a unique composite of closed-cell foam with a silver mylar finish. The semi-rigid design is stiff enough to stand along the inside of the windshield using sun visors or window framing. It folds up flat and easily stores in the included storage sleeve. Some designs may require velcro and suction cups. A Heatshield is an excellent short-term remedy for cockpit overheating.



Sabre Cockpit HeatShields Set

Description	Part Number	Price
COCKPIT HEATSHIELD SET, Sabre 40 (P&W JT-12 Engines) (set of 2)	SAB-900	\$405.00
COCKPIT HEATSHIELD SET (SEPARATE PIECES), Sabre 40 (P&W JT-12 Engines) (set of 10)	SAB-910	\$440.00
COCKPIT HEATSHIELD SET, Sabre 65 (Garrett 731 Engines)(CT-39) (set of 2)	SAB-920	\$405.00
COCKPIT HEATSHIELD SET (SEPARATE PIECES), Sabre 65 (Garrett 731 Engines)(CT-39) (set of 10)	SAB-930	\$440.00
COCKPIT HEATSHIELD SET, Sabre 75-Alpha (GE Engines) (set of 2)	SAB-940	\$405.00
COCKPIT HEATSHIELD SET (SEPARATE PIECES), Sabre 75-Alpha (GE Engines) (set of 10)	SAB-950	\$440.00
COCKPIT HEATSHIELD SET, Sabre 80 (set of 10)	SAB-960	\$440.00

The **Rockwell Sabre 40, 65, 75, 80 Cockpit Cover** helps reduce damage to the upholstery and avionics caused by excessive heat and can eliminate problems caused by leaking door and window seals. They keep the windshield and window surfaces clean and help prevent vandalism and theft.

The **Rockwell Sabre 40, 65, 75, 80 Cockpit Cover** is designed to cover the windshield and side windows of the cockpit. Attachment buckles are made of nonmetal *Delrin*, designed for rugged outdoor use. The windshield cover comes with a duffle bag. The N-number can be imprinted onto the cover for an extra charge. The windshield cover is trimmed in the colors of the aircraft.

This cover type is made from Silver Acrylic Sunbrella canvas and is 100% lined with a soft and smooth microfiber. Bruce's Custom Covers developed this material combination especially for aircraft protection. The outer material is medium weight and treated for water resistance, UV resistance and anti-static buildup. The inner lining is a very soft and smooth microfiber to prevent scratching. The material is very reflective, and tests show that the cabin interior temperature can be reduced to near-ambient temperature on the hottest of days. It is water, ice and snow repellent, yet breathable to allow moisture to escape from between the cover and the aircraft surface.

The **Rockwell Sabre 40, 65, 75, 80 Cockpit/Nose Cover** helps reduce damage to the upholstery and avionics caused by excessive heat and can eliminate problems caused by leaking door and window seals. They keep the windshield and window surfaces clean and help prevent vandalism and theft.

The **Rockwell Sabre 40, 65, 75, 80 Cockpit/Nose Cover** is designed to cover the windshield and side windows of the cockpit. Attachment buckles are made of nonmetal *Delrin*, designed for rugged outdoor use. The windshield cover comes with a duffle bag. The N-number can be imprinted onto the cover for an extra charge. The windshield cover is trimmed in the colors of the aircraft.

This cover type is made from Silver Acrylic Sunbrella canvas and is 100% lined with a soft and smooth microfiber. Bruce's Custom Covers developed this material combination especially for aircraft protection. The outer material is medium weight and treated for water resistance, UV resistance and anti-static buildup. The inner lining is a very soft and smooth microfiber to prevent scratching. The material is very reflective, and tests show that the cabin interior temperature can be reduced to near-ambient temperature on the hottest of days. It is water, ice and snow repellent, yet breathable to allow moisture to escape from between the cover and the aircraft surface.

Description	Part Number	Price
TRAVEL COVER, Light Weight Travel Cockpit Cover, Sabre 40 (P&W JT-12 Engines)	SAB-800	\$585.00
TRAVEL COVER, Light Weight Travel Cockpit Cover, Sabre 65 (Garrett 731 Engines)(CT-39)	SAB-805	\$585.00
TRAVEL COVER, Light Weight Travel Cockpit/Cabin Cover, Sabre 65 (Garrett 731 Engines)(Ct-39)	SAB-810	\$1140.00
TRAVEL COVER, Light Weight Travel Cockpit/Nose Cover, Sabre 65 (Garrett 731 Engines)(CT-39)	SAB-815	\$1610.00
TRAVEL COVER, Light Weight Travel Cockpit Cover, Sabre 80	SAB-820	\$755.00
TRAVEL COVER, Light Weight Travel Cockpit/Nose Cover, Sabre 80	SAB-825	\$1560.00

Prices subject to change. Other Covers and Design Alterations: Prices on request.

Prices are FOB Morgan Hill, CA. Sales tax on orders shipped to California addresses. Orders take approximately 3 weeks to complete. For domestic orders we normally ship by UPS ground service. Next day shipping and air parcel post is available on request. We can take payment by Visa, Mastercard, American Express, or Discover.

Bruce's Custom Covers offers protective covers and plugs for virtually every type of airplane, jet and helicopter. If you have questions about our products please call any time TOLL FREE: 800/777-6405, or FAX: 408/738-2729.

Aircraft Cover Ordering Form

Customer Info	Name _____
	Shipping Address _____ _____
	Phone & Email _____
Payment	Credit Card Number <input type="text"/> <input type="text"/> <input type="text"/> <input type="text"/> <input type="text"/> <input type="text"/> <input type="text"/> <input type="text"/> <input type="text"/> <input type="text"/> <input type="text"/> <input type="text"/> <input type="text"/> <input type="text"/> <input type="text"/> <input type="text"/> <input type="text"/> <input type="text"/> <input type="text"/> <input type="text"/> <input type="text"/> <input type="text"/>
	Exp. Date <input type="text"/> <input type="text"/> / <input type="text"/> <input type="text"/> V-Code* <input type="text"/> <input type="text"/> <input type="text"/> <input type="text"/> <small>*Visa, Mastercard, Discover: last 3 numbers on back of card, right of signature. Amex: 4 smaller numbers printed on face of card.</small>
A/C Info	Reg / Tail Number: _____ Aircraft Type: _____ Year: _____
	Colors / Paint Scheme (be specific): _____

Please specify below the items you would like to order.

See technical sheet or visit our website for part numbers (or just fill in the description)

1	Part Number	Quant	Description	Price
2				
3				
4				
5				
6				
7				
8				
9				
10				
				TOTAL

Optional Items (check the box of the item you want)

- ☐ Imprint aircraft registration number onto both sides of canopy cover.....\$35.00
- ☐ Imprint aircraft registration number onto jet intake covers.....\$55.00